

# MEALS ON REELS

THE ULTIMATE GUIDE FOR YOUR  
FISH MARKET



*Quality and Service are our Priority*

☎ 22 46 11 66

✉ [info@kellen.eu](mailto:info@kellen.eu)

🌐 [www.kellen.eu](http://www.kellen.eu)



## WE OFFER

Assistance and guidance in the management of fish safety, transportation and quality, with each module providing practical information and advice on how to ensure food safety and quality during all stages of retail distribution and sale.

## SEALED TRAYS

The new trays have excellent stacking properties. Preserving resources is important to us as a food production company but is also a real buying incentive for many consumers that pay attention to sustainability. The fact that less plastic is used for the packaging is clearly visible, since we moved from a Snap-On lid to a thin, but solid top film.

## WHY?

The reliable seal ensures safe transport of the tray, where the top film can be easily removed from the tray by the consumer. Overall, we are very satisfied with our investment, which has brought many improvements for ourselves, our retailers, and our consumers.



**PLASTIC CUTTING BOARD**

■ Cut the size you need  
■  
■  
■  
 Resistant to moisture, odor and bacteria and are the most dense plastic cutting boards available that will not dull your knives.



**SHARPENING MACHINES**

Reduced material removal  
 long lasting cutting edge.  
 Low grinding costs.  
 Professional, safe and precise grinding and honing.

**NARROW BLADE KNIVES**



**FILLETING KNIVES**



**SALMON SLICERS**



**CLEAVERS**



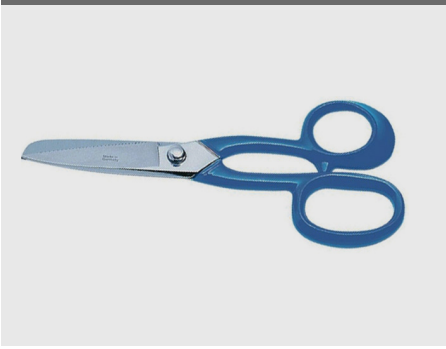
**HAND SAWS**



**SHARPENING STEELS**



**FIN SHEARS**



**TONG FOR BIG FISH BONES**



**TONG FOR SMALL FISH BONES**



**DRY SEASONING**



**MARINATE SEASONING**



**BREADCRUMBS**



**SMOKE WOOD**



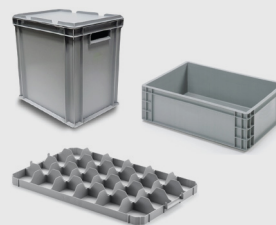
**ELEVATOR TROLLEY WITH COVER**



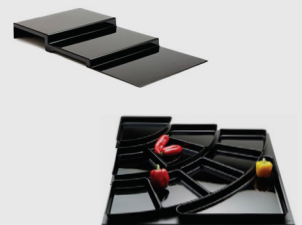
**WORK TABLE**



**CATERING BOXES**



**COUNTER TRAYS**



**DOLLYS**



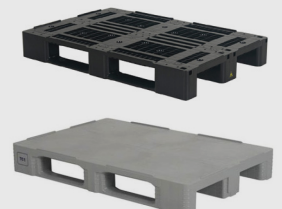
**STACKING CRATES**



**TURN BOXES**



**PALLETES**



**PEDAL BIN**



**WHEELIE BIN**



**MOBILE WASTE BIN**



**BUCKETS AND LIDS**



**GARBAGE BAG STAND WITH PEDAL**



**MESH WASTE BIN**



**INDUSTRIAL WASTE BINS**



**INDUSTRIAL FOOD BINS**



# PRECAUTIONARY BODYWEAR



PE APRONS



RUBBER APRONS



METAL MESH APRONS



METAL MESH GLOVES



THERMAL CLOTHING



CHILL ROOM -10 °C



COLD STORE -49 °C



COLD PROTECTION  
-200 °C



VLIE VISITOR COATS



COVERALLS WITH HOOD



HEAT PROTECTION GLOVES



PROTECTION GLOVES



DETECTABLES



PE SLEEVES



PEAK CAPS



HEAD & FACE PROTECTION



BOOTS & SHOES COVERS



CLOGS



SAFETY SHOES



SAFETY BOOTS



## BASIC SCALES



Perfect weighing performance

## LABEL PRINTERS



Product labeling, manufacturing trade and logistics

## WEIGH LABELING SYSTEMS



Up to 70 packages/minute

## FLAKE ICE MACHINES



Ice output 1500 kg / 24 h

## STANDARD - PORTION - SUSHI FRESH PRODUCT SLICER



Complete stainless-steel frame with adjustable feet

## METAL DETECTORS



Delivers excellent detection sensitivities

## FISH SKINNERS



Remove only the skin or the brown fat

## CLEANING BASINS



Low operating costs

## BOOTS & SOLES CLEANING



Two-phase cleaning water/chemical separate

## JUMBO 42/XL/XXL

↑ H180 mm  
370 mm  
← 420 mm →

↑ H180 mm  
410 mm  
← 420 mm →

↑ H180 mm  
320 mm  
← 420 mm →

↑ H180 mm  
460 mm  
← 420 mm →



## MARLIN 52

↑ H200 mm  
520 mm  
← 500 mm →



## MARLIN 90

↑ H100 mm  
280 mm  
← 940 mm →



↑ H100 mm  
320 mm  
← 890 mm →

## POLAR 80

↑ H200 mm  
510 mm  
← 760 mm →



↑ H200 mm  
510 mm  
← 700 mm →

↑ H200 mm  
560 mm  
← 700 mm →

↑ H200 mm  
460 mm  
← 810 mm →

## POLAR 110

↑ H280 mm  
620 mm  
← 1050 mm →



↑ H280 mm  
670 mm  
← 1000 mm →

↑ H280 mm  
590 mm  
← 1100 mm →

## POLAR 2-40/2-50

↑ H240 mm  
400 mm  
← 620 mm →



↑ H240 mm  
500 mm  
← 620 mm →

## POLAR 2-75

↑ H250 mm  
750 mm  
← 620 mm →



↑ H250 mm  
840 mm  
← 530 mm →

## POLAR 2-85/2-95

↑ H280 mm  
730 mm  
← 1100 mm →



↑ H280 mm  
850 mm  
← 1000 mm →

↑ H300 mm  
830 mm  
← 770 mm →

↑ H255 mm  
830 mm  
← 840 mm →



# MANUAL, SEMI & FULLY AUTOMATIC SEALING MACHINES



## SEAL 400



Overall Dimensions:  
400 x 500 x 600 h open

## TRAY 600



Overall Dimensions:  
610 x 600 x 560 h open

## TRAY 800



Overall Dimensions:  
610 x 600 x 1100 h open



VG



PRO

## OLYMPIA VG & PRO

The Olympia models has been developed to easily pack foods in pre-formed trays. The semiautomatic configuration with the rotary table and the two vacuum chambers, maximizes the production! In fact, during the packaging cycle it's possible to unload and load up the second chamber, increasing productivity; All thanks to an ultra-reliable and easy-to-operate machine.



Sealing



Modified Atmosphere



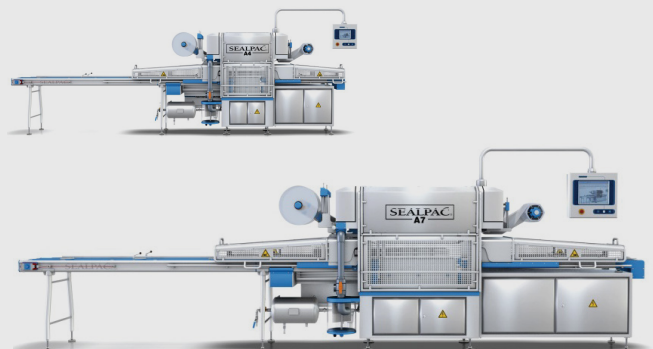
Skin protruding

## TRAYSEALERS



Thanks to the Athena's strong stainless steel structure, easy maintenance and conformity to hygienic requirements, this machine is ideal for use in small and medium sized companies

## TRAYSEALERS



Single and double lane construction. Use it to boost your productivity. Servo controlled film transport. Pneumatic tooling quick exchange system. Machine can be operated on both sides. Separate channels for vacuum and gas. Touch screen panel with 50 programs.

# FULLY AUTOMATIC THERMOFORMING MACHINES



## FULLY AUTOMATIC

All models are particularly professional and come with uniform standard features. Even with our smallest solution customers should not miss out on any benefit of our thermoformers. Rapid Air Forming, Compact design, Quick tooling changeover, Easy maintenance and cleaning, Optimized product support

Our exclusively developed forming system for creating thermoformed trays without pre-heating.

Your benefits:

Clearly better forming quality

Corner reinforcement of the package

Use of thinner films possible

Faster cycle times due to shorter forming and ventilation times

### PP & CPET TRAYS



### FISH PADS



### SHRINK BAGS



### TOP & BOTTOM FILMS FLEXIBLE & RIGID

